

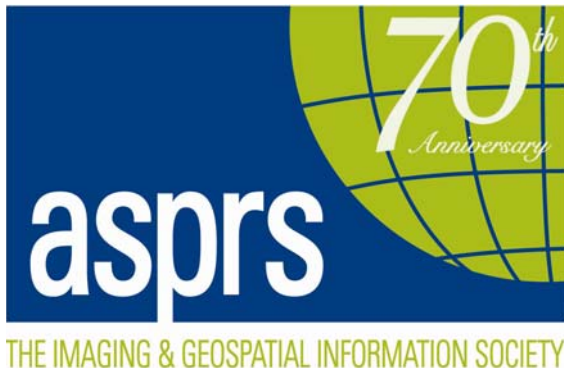
American Society for Photogrammetry and Remote Sensing

The Imaging and Geospatial Information Society
PUGET SOUND REGION

Issue 01-2005

<http://www.photogrammetry.com/ASPRS-PSR>

SPRING 2005



Board of Directors

Joshua Greenberg	(President)
Chris Gardner	(Secretary)
Mark Hird-Rutter	(President Elect)
Paul H Mabry	(Vice President)
Dave Brown	(Treasurer)
Ward Carson	(Past President)
Terry Curtis	(National Director)
Zhenkui Ma	(Newsletter Editor)
Alan Walford	(Webmaster)

March 21, 2005 | Issue No. 1

[PRESIDENT'S MESSAGE](#)

[THE NATIONAL PERSPECTIVE](#)

[WELCOME NEW MEMBERS](#)

[ASPRS SPRING INFORMATION EXCHANGE AT BCIT](#)

[GIS FOR TSUNAMI RELIEF](#)

[CALENDAR OF EVENTS](#)

[ADVERTISER HIGHLIGHT](#)

[PROFESSIONAL DIRECTORY](#)

PRESIDENT'S MESSAGE

By: Joshua Greenberg

The year has started off well in the region with a successful information exchange at BCIT. I want to thank all of you who participated in the event but a special thank you goes to Mark Hird-Rutter and his students for organizing and hosting us. Mark has written up a summary of events in this newsletter for those of you that are curious about some of the talks. I also would like to welcome the BCIT students who recently joined ASPRS and I hope that we can continue to be kept informed of the interesting projects they are working on.

Another gathering occurred during the LSAW conference when we had our regions annual meeting. We were able to get Frank Croft of Geospatial Imaging Solutions and Craig Berry of Walker and Associates to join us. Most of the meeting was spent preparing for the BCIT information exchange while inhaling the appetizers and beer...I think we were successful. We now have officially appointed our officers for the coming year.

As some of you may have heard the ASPRS is pushing to increase membership and locally our region has two main goals for this coming year. The first is to become active in supporting

other conferences like the Puget Sound Region used to do several years ago. Our first endeavor will be hosting a session at the Washington URISA meeting in Tukwila from the 9th to the 11th of May. If you are interested in speaking on a remote sensing topic at the conference contact me soon. Also note that the conference is now called the Washington GIS Conference.

Our second goal is to try and build communication between our Remote Sensing providers and users. This includes discussions about new products, techniques and methods from the providers and increased partnership and local purchases from the user end. One outcome of this direction is the new section of the newsletter devoted to one of our advertisers which Walker and Associates is using to tell us about some of their latest projects.

I hope to see some of you at the Washington GIS Conference and as always, if you have any ideas, concerns or comments please contact me.

THE NATIONAL PERSPECTIVE

By: Terry Curtis, Puget Sound Region Director

Greetings Puget Sound Region members! Here's a brief update on ASPRS National affairs and the 2005 Annual Conference that took place in Baltimore in early March.

Annual Conference: The Annual ASPRS Conference was another enjoyable meeting, although attendance was slightly below expectations. The theme was "Geospatial Goes Global: From Your Neighborhood to the Whole Planet". Workshops and technical sessions were well attended, and all seemed to enjoy the exhibits, social events. The weather was quite variable, and went from a warm, spring-like 60+ degrees early in the week, to snow and bitter cold towards the end. All in all, another great conference.

Financial Status: Continued outstanding fiscal planning and management keeps ASPRS in a favorable financial position. Being conservative on Income projections, and liberal on Expense projections continues to provide us with unexpected "surpluses" at the end of the year. Operating RESERVES are building up to help sustain the Society in the event of any catastrophic economic events. ASPRS now has a solid investment policy to help insure financial stability and growth.

Mike Renslow "Retires": Mike Renslow (of Columbia River Region) has "retired" from his position as ASPRS Treasurer, and was replaced by Past President, Don Lauer. Mike was instrumental in helping the Society claw it's way back to financial independence after events of the late 1990's. One of his major legacies in this regard is a monthly cashflow report used by the Executive Committee and the Board to keep a close watch in near "real-time" on the Societies finances. This "Renslow Report" has been a life saver, and will be continued indefinitely, and retain it's founders name. Thanks Mike, for another job well done!! Mike is continuing as the chairman of the Certification Committee, and is working with some federal groups to assist in development of exam questions for use in Licensing activities for Photogrammetrists.

ASPRS Foundation: With the payoff of the mortgage on the ASPRS headquarters, we have shifted our focus to raising funds for the ASPRS Foundation. Our goal now is to beef-up the funding for the Foundation such that all current awards are fully endowed, and begin establishing some new awards. As with the building fund, the National Board voted to “match” all contributions to the Foundation to speed-up the endowment process. In the spirit of giving, and in providing educational support to upcoming students and professionals, please consider donating a tax-deductible contribution to this more-than-worthy cause!

New Manual of Photogrammetry: Get your copy of the new 5th Edition of the premiere reference on Photogrammetry! Cost is \$125 for Non-members, \$94 for ASPRS Members, and \$50 for students, and can be purchased on-line from the “ASPRS Store.

Membership: For the first time in TEN YEARS, ASPRS actually experienced a slight INCREASE in membership. Hopefully this is just the beginning of a new trend, and one indication that our focus on improving membership is having an impact. One major point that was addressed is the need for ALL current members to be “Champions” of the organization, promoting APSRS programs, benefits, and membership. If we ALL can just do a little to help promote the Society and the profession, and perhaps even just find ONE new member each we can have a huge impact! Attracting more students is another effort we need to pursue. National continues to “tweak” the Bylaws to make it easier for students to join, and for Student Chapters to be formed. The Puget Sound Region hopes to get the BCIT Chapter up and running SOON!

WELCOME NEW MEMBERS

By: Terry Curtis, Puget Sound Region Director

The Puget Sound Region of ASPRS would like to extend a **WARM WELCOME to the following NEW MEMBERS:**

Novica Janicijevic;
Andrew Maguire;
Dusanka Urosevic;
Gyaneshinaranand Verma
James Anthony Zegarchuk

We all look forward to seeing you all at an upcoming Puget Sound Region event! (Just don't make me pronounce your names!)

One common thread among the more active Regions is MEMBERS recruiting NEW MEMBERS. I'm sure most of you know a colleague or co-worker who is not a member, but who could benefit from membership. We all need to encourage those folks to join us in ASPRS - the PREMIER Geospatial professional association.

ASPRS SPRING INFORMATION EXCHANGE AT BCIT

By Mark Hird-Rutter

Introduction

This last Friday, March 04, 2005 the ASPRS Puget Sound Region held its Spring Information Exchange at BCIT. The event was well attended with over 30 people from Industry, Academics, Students and Non profit agencies. The topics were all interesting and varied and many questions were fielded by the audience.

The Days Talks

9:30. Opening Remarks (Mark Hird-Rutter, BCIT)

Mark Hird-Rutter welcomed the group and introduced the BCIT student who have all become students members (in process) of the ASPRS

10:00. Digital Aerial Camera (Bill Lakeland, Selkirk Remote Sensing)

Bill Lakeland described the two new digital aerial cameras, designed and assembled by Selkirk and showed the different configurations that are possible for acquisition. The camera is capable of 16bit imagery which enables a much broader range of flying conditions than their RC30. One of the next steps for commercialization of this dual camera system is the camera calibration. It is hopeful that the BCIT campus will be used for this purpose.

10:30. Mountain Pine Beetle Detection (Art Roberts, Simon Fraser University)

Art Roberts of the Geography department of Simon Fraser University described how he used his rather unique multispectral film camera and ground truthing to come up with a system to detect mountain pine beetle compromised trees before the beetles fly and infest a greater area. Using this early detection system it would be possible to log the trees and destroy the beetles with a very high level of certainty.

11:00. Tsunami Relief (Dave Brown)

Dave Brown's talk on his work using GIS to assist relief efforts in the Tsunami relief effort was spelling-binding. The impact of this natural disaster will be with us for many years to come. GIS is being used not only for assisting in organizing and monitoring the relief efforts but also in trying to reconstruct land information in the stricken areas so that people can recover their property, and fishery. There are other important things to track. Because of civil war in the region there were areas of land mine use. Of course these are now all mixed up with debris and possibly washed out to sea. There is much work to do and we wish Dave well in his task

11:30. Reducing cost and increasing efficiency by using the web and giving away data (Josh Greenberg, Skagit County GIS)

Josh Greenberg discussed the day to day issues of using GIS and supplying the needs of the government agencies that use the system. The general public has specific needs such as the requirements for plots or plans of their property. In the past the workload has grown to the

point that it was very difficult to meet the needs of these diverse groups. The Skagit GIS has been working diligently to convert much of their products to web based systems so that individuals can go and download plots or sections of plots in PDF and then print these on their own printers.

12:15 Lunch

12:45 Panel Discussion Stuart McRitchie, Mike Thompson, Alan Walford, Dan Tresa

We had a dynamic and interesting discussion on some of the current practices in the mapping industry mainly offshore labors. I had 6 or 7 questions for the group but found that one question was enough to keep us going for the allotted time. I would like to thank all those who partook in this discussion.

1:30. A Land Use Based Population Projection Model For Richmond (Stuart Jones City of Richmond)

Stuart Jones from the City of Richmond showed the methods and uses of population projection using the City of Richmond's GIS. One of the strong points of their system is the accuracy of the land title layer. This layer is spatially very accurate and allows proper overlaying of detailed spatial layers. House positions within properties and the alignment of property boundaries with zoning boundaries are accurate, allowing the building of predictable queries using the data. With this GIS the city is able to make very detailed and complicated zoning decisions.

2:00. Photomodeler™ in teaching (Mark Hird-Rutter BCIT)

Mark Hird-Rutter described the use of the software tool Photomodeler™ as a teaching aid. This software shows concepts such as camera calibration, geometry, image correlation, 3D modeling, and terrestrial photogrammetry in an exciting hands on process.

2:30 Reception

Conclusions

There are some things that were learned this time that we can take ahead to our next meeting:

1. It seems that there is a lot of interest in the ASPRS and that it needs but a little urging to thrive in the BC Washington region again.
2. We need to encourage the growth of the ASPRS in our area so that more people know what it is and what it stands for.
3. It would be good to involve even more students in the next meeting.

Overall the event was a great success and I would like to thank all those who came out and participated

GIS FOR TSUNAMI RELIEF

By Dave Brown

In January, a group of dedicated GIS professionals organized in Seattle to help with the tsunami relief effort. Glenn Brooks, the GIS manager for the city of Woodinville had been volunteering with a Mercy Corps, a Portland based non-profit organization for the last year. With his contacts at Mercy Corps and the Central Puget Sound GIS users group Glenn was able to build a funded volunteer organization in Seattle whose goal is to use GIS and remote sensing to aid in the relief and rebuilding effort in SE Asia.

The Seattle Data Center (SDC) is based in the Evans School for Humanitarian Relief on the UW campus. Intel Corporation has donated eight new workstations and four notebook computers. ESRI has donated 10 ArcGIS licenses and Leica Geosystems has donated 8 ERDAS Imagine licenses. Mercy Corps was able to get access to all of the commercial satellite imager in the region through the Pacific Disaster Center (PDC) located in Maui, HI. As part of this arrangement, SDC is helping to re-project the imagery to a common coordinate system.

The SDC is also sending two teams of volunteers into the region to familiarize the various relief organizations with GIS and to identify some potential projects for the SDC. This week Glenn will be going to Sri Lanka to coordinate the field work. In Seattle, a core group of volunteers continue to help gather data and process the imagery.

Even with the generous donations there are still things that we need. We are looking for some handheld GPS receivers for the field crew. We also need external hard drives to transport and backup data. All donations are tax deductible. We are also looking for GIS data in the region.

If you would like volunteer or just visit, the SDC is located at Building 4042 12th Ave on the UW campus just north of Condon Hall. The phone number is (206) 221-2502. For more information contact Dave Brown at dbrown@mercycorpsfield.org.

CALENDAR OF EVENTS

March 28-29, 2005
GIS in Action 2005
ASPRS Columbia River Region
And Oregon URISA
Portland, Oregon
<http://www.orurisa.org/>

May 9-11, 2005
Washington GIS Conference
WA URISA
Tukwila, Washington
<http://waurisa.org/>

October 23-27, 2005
PECORA 16 – Global Priorities in Land Remote Sensing
ASPRS
Sioux Falls, South Dakota
<http://www.asprs.org/>

NEWSLETTER ADVERTISING RATES (ALL PRICES IN US DOLLARS)

ASPRS Puget Sound Region

BUSINESS CARD ADVERTISING:

4 Issues per Year
\$100.00 per Year
Please send 4 Business Cards with order, or
Provide a scanned image (300dpi) via email

DISPLAY ADVERTISING:

(provide copy in MSWord format)

<i>full page</i>	<i>half page</i>
\$100 per ISSUE	\$60 per ISSUE

ADVERTISER HIGHLIGHT

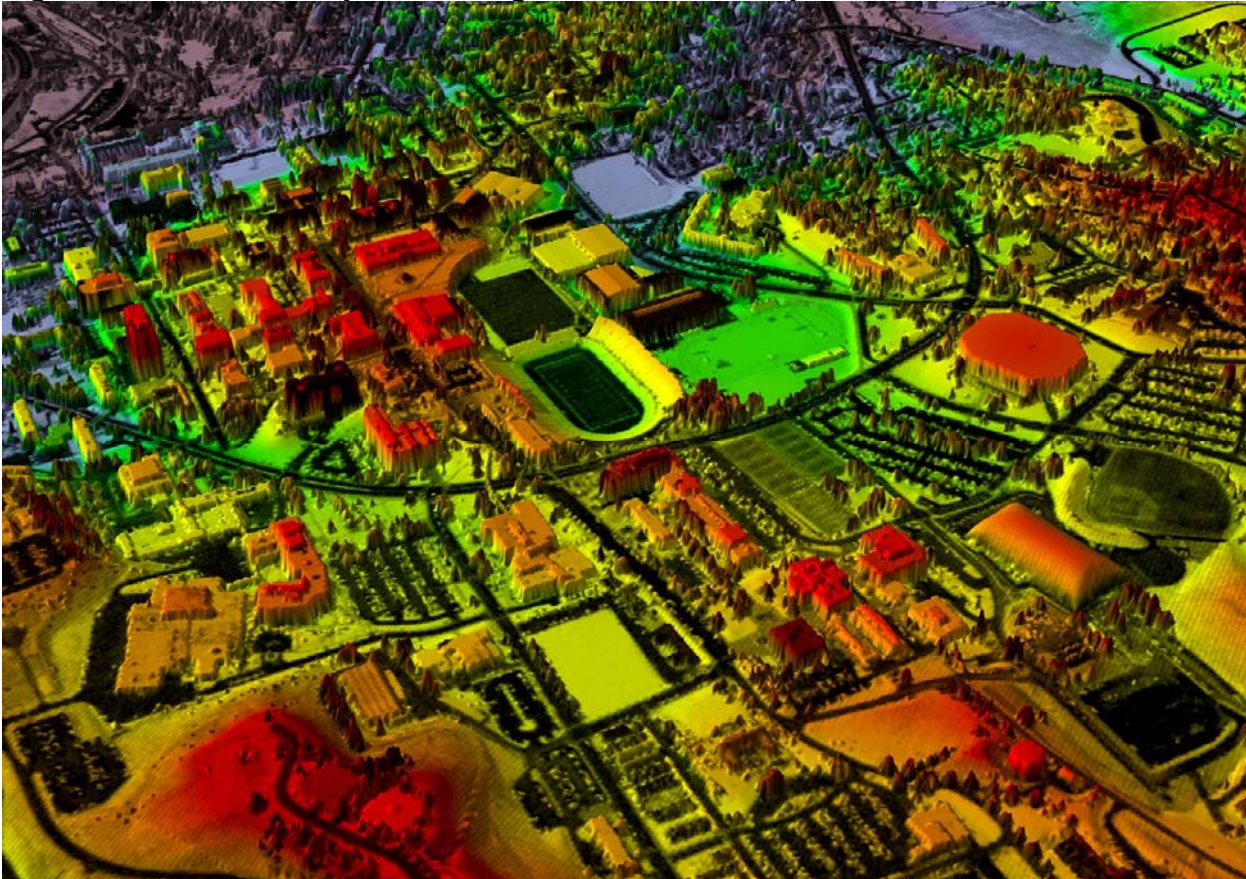
Walker and Associates is a Seattle firm providing acquisition and processing of geospatial data and imagery for engineering, environmental and GIS applications. Founded in 1953 by George F. Walker, the company began its flight operation with a 1929 Curtiss Robin aircraft and a Fairchild aerial camera. At that time Walker's photogrammetric mapping was compiled on Bausch and Lomb Multiplex stereo plotters and final maps were created by ink drafting or negative engraving (scribing). Walker embraced new technology as it became available, first upgrading to Kelsh plotters and in the 1960's, acquiring a pair of Galileo Santoni Model III compilation instruments. In the 1980's the company opened an office in Anchorage and began purchasing Zeiss analytical plotters. With the advent of GPS technology Walker began testing airborne GPS control techniques which are now utilized on nearly all multi-flightline projects. In the same decade the company began purchasing Zeiss analytical stereo plotters and in the 1990's began using softcopy photogrammetric work stations from Z/I, DatEM, and AutoMetric. In 1988, the company became part of the Aero-Metric Group of Companies which employ a staff of 280, technicians, licensed pilots, certified photogrammetrists (ASPRS), and registered land surveyors in 6 offices nationwide. Walker's Alaska operation was merged into Aero-Map US, the Anchorage office of Aero-Metric.

Walker continued to increase the range of its services and in 1999, flew its first airborne LiDAR mission to acquire topographic data for flood studies. In the years since, Walker has flown LiDAR missions to acquire data for land development, highway route studies, forestry applications, reservoir siltation studies, and airport obstruction surveys. From our hangar at Boeing Field Walker operates a Cessna T-210 aircraft set up with dedicated GPS receivers for navigation and airborne control and a Zeiss TOP aerial camera equipped with a gyroscopically stabilized mount and an image-motion-compensated film magazine. The same mount accommodates the company's Zeiss Digital Mapping Camera

(DMC). We also have custom mounts for the company's Optech ALTM 3070 LiDAR sensor and other LiDAR equipment.

In our 10,000 square foot facility Walker maintains a film library dating back to 1936. We offer research and viewing services and a traditional film photo lab with mounting and laminating as well as precision image scanning. Walker employs a staff of 26 and provides a full range of aerial data acquisition, satellite imagery, photogrammetric, and geospatial data processing services. We are privileged to serve a wide range of clients in the public and private sector and to live and work in Seattle and the Pacific Northwest.

Figure 1. LIDAR intensity of Washington State University stadium in Pullman.




PROFESSIONAL DIRECTORY



EAGLE
GPS Survey Corporation

ALBERT F. HERTEL, P.L.S.
Secretary Treasurer


6110 S.W. Lombard Ave.
Beaverton, OR 97008-4736
(503) 643-1073



SELKIRK REMOTE SENSING LTD.
4400 Agar Drive, Suite 201
Richmond, British Columbia
Canada V7B 1A3

*Suppliers of aerial photography
to photogrammetric, engineering
and resource management users.*

Parker G. Williams, President (604) 276-8111



WALKER AND ASSOCIATES
Photogrammetric & GIS Services

Jeffrey A. Kenner
Marketing Representative
(206) 244-2300

12652 Interurban Ave. S. Voice-mail: (206) 617-9162
Seattle, WA 98168 FAX: (206) 244-2333
E-Mail: jkenner@walkermap.com Mobile: (206) 617-9162



marshall

Terry Bartlett
Director of Sales & Marketing

tbartlett@marshallgis.com
1603 Cooper Point Rd NW
Olympia, WA 98502-8325
p: 360-352-1279
f: 360-357-9903
www.marshallgis.com

HUITT-ZOLLARS

HUITT-ZOLLARS, INC. • 302 South 9th St. • Suite 101 • Tacoma, WA 98402-3699

PAUL H. MABRY pmabry@huitt-zollars.com
253.627.9131 phone
253.627.4730 fax
huitt-zollars.com

"your choice for creative land survey solutions"

**Your Card
Here !!!**